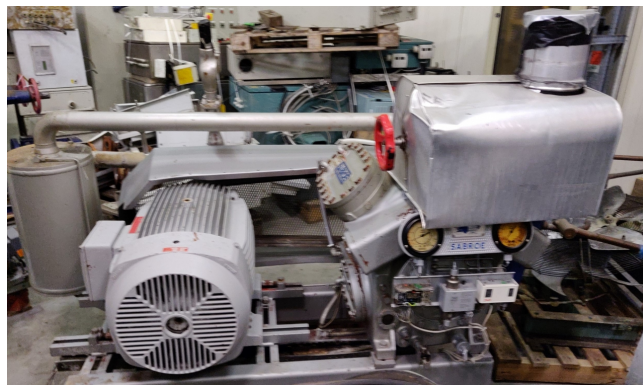


Sabroe SMC 104 L HP cool/freeze unit

Specifications

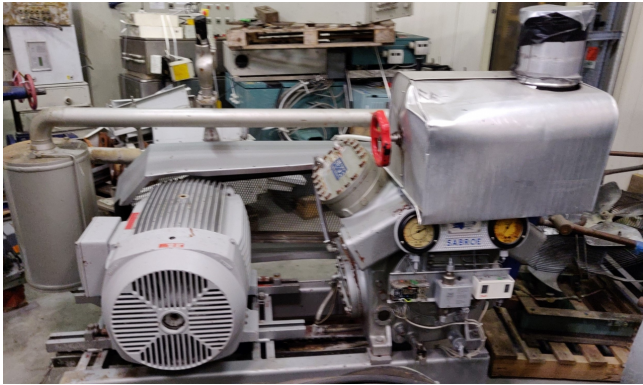
Marka	Sabroe
Typ	SMC 104 L HP cool/freeze unit
Czynnik chłodzący	NH 3 (ammonia)
kW at +10°C/+40°C	69.1
kW at 0°C/+40°C	177.9
kW at -5°C/+40°C	141.6
Silnik elektryczny Specs	55 kW at 1480 RPM
m3 / h	275
Stock	1



Description

Used Sabroe SMC 104 L HP cool/freeze unit

Used, well maintained V belt driven JCI Sabroe SMC 104 L-HP Ammonia Nh3 compressor. Consisting of all necessary components (see all pictures attached). Our capacity table is based on ammonia NH3. For all the other specs, see the picture of the manufacturer model plate or the attached pdf file (if available). *Why choose for HOSBV? Were not only the largest used refrigeration specialist in Europe, but also, we deliver all equipment including an extensive test, warranty and industrial cleaning. *Optional we can also perform a new paint job and arrange the logistics



Model	Number of cylinders	Swept volume at 1500 rpm	Swept volume at 1800 rpm	Nominal capacities in kW at 1500 rpm			Nominal capacities in kW at 1800 rpm			Unit dimensions in mm			Weight excluding motor	Sound pressure level at 1500 rpm	Sound pressure level at 1800 rpm
				Single-stage	High-stage	Booster	Single-stage	High-stage	Booster	L	W	H			
SMC 104 S	4	226	271	127	155	35	153	235	42	2363-2865	1213	1219	1195	79	82
SMC 104 E	4	281	339	166	250	47	196	305	52	2363-2865	1213	1219	1215	86	89
SMC 106 S	4	339	N/A	203	306	58	N/A	N/A	N/A	2363-2865	1213	1219	1215	80	83
SMC 106 E	4	339	407	181	281	53	229	352	64	2363-2865	1213	1219	1215	81	83
SMC 108 L	6	424	509	247	375	71	297	450	85	2363-2865	1213	1219	1215	82	84
SMC 108 E	6	509	N/A	304	459	87	N/A	N/A	N/A	2363-2865	1213	1219	1215	82	84
SMC 108 S	8	452	543	255	391	71	306	469	85	2313-2315	1363	1247	1595	82	84
SMC 108 L	8	566	679	330	500	94	396	600	113	2313-2315	1363	1247	1630	83	85
SMC 108 E	8	679	N/A	406	612	116	N/A	N/A	N/A	2313-2315	1363	1247	1630	83	85
SMC 112 S	12	679	814	382	586	106	459	703	127	3279-3687	1475	1448	2255	83	85
SMC 112 L	12	848	1018	495	750	141	593	900	169	3279-3687	1475	1448	2285	83	86
SMC 112 E	12	1018	N/A	609	918	173	N/A	N/A	N/A	3279-3687	1475	1448	2330	83	86
SMC 136 S	16	905	1086	530	782	141	611	938	170	3329-3737	1536	1445	2505	84	86
SMC 136 L	16	1131	1387	659	1000	188	791	1200	226	3329-3737	1536	1445	2535	84	87
SMC 136 E	16	1357	N/A	812	1214	221	N/A	N/A	N/A	3329-3737	1536	1445	2590	84	87

* Other refrigerants available on request

Nominal capacities are based on:
1500 rpm at 50 Hz.
1800 rpm at 60 Hz or VSD.

Design pressure, HP side: 28 bar
Design pressure, LP side: 18 bar
Differential pressure: 25 bar.

Sound pressure levels in free field, over reflection

Min./max. speed	R717
SMC S-series	900-1800 rpm
SMC L-series	900-1800 rpm
SMC E-series	900-1800 rpm